



# LINK<sup>®</sup> SLED Prosthesis

———— NATURAL FIT ————

Simple – Reproducible – Results



## LINK<sup>®</sup> SLED Prosthesis

- Unicompylar knee resurfacing
- A comprehensive and versatile system<sup>2</sup>
- Outstanding long-term results<sup>2,3,4,6</sup>

A 3D rendering of a breast implant and its components. The implant is shown in a cutaway view, revealing its internal structure. The outer shell is a smooth, rounded dome. Inside, there is a textured, porous inner shell. The implant is shown in a light gray color, with a blue horizontal line passing through the middle. The background is a light, neutral color.

## NATURAL FIT

- SIMPLE implantation
- REPRODUCIBLE outcomes
- RESULTS you can trust

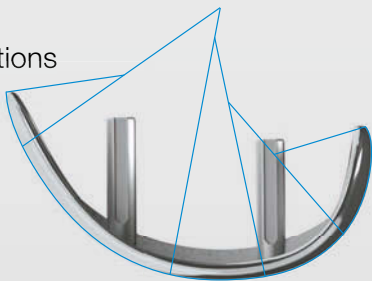


# LINK<sup>®</sup> SLED Prosthesis

NATURAL FIT

## Naturally Shaped Components

- Proven polycentric femoral profile
- Minimized risk of patellar impingement
- Essential design for future treatment options



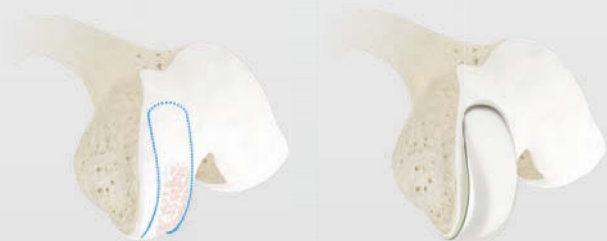


# Simple

## IMPLANTATION

### CutLESS – Femoral Preparation

- Maximum preservation of bone and healthy tissue
- Full and continued control of implant positioning
- Minimized number of surgical steps



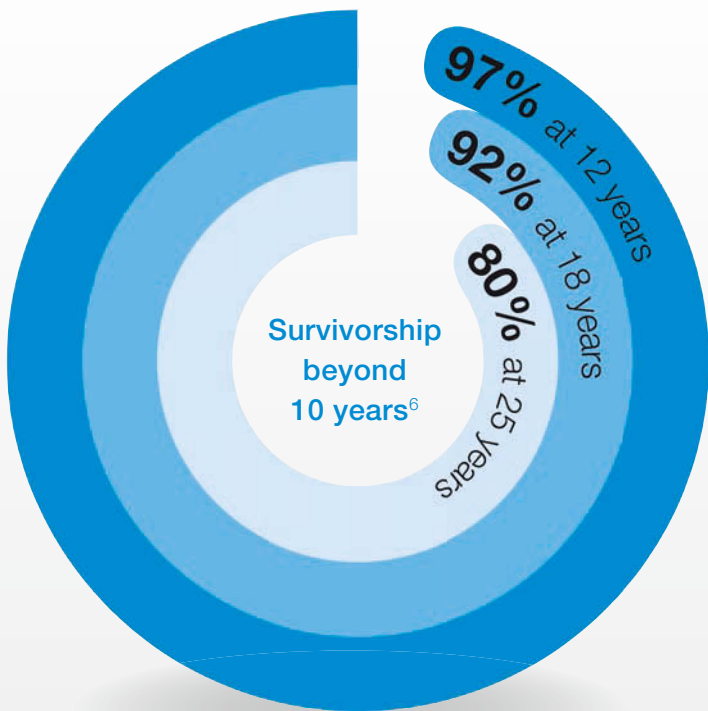


## Reproducible OUTCOMES

### Forgiving

- Unconstrained kinematics
- Misalignment tolerance
- Better results compared to other implants, even in low volume sites<sup>4,5</sup>





## Results

YOU CAN TRUST

### Proven Implant Longevity

- Extensive clinical experience<sup>4</sup>
- Over 3 decades of unchanged design
- Excellent real-world outcomes<sup>4</sup>



\* The Swedish Knee Arthroplasty Register, Annual Report 2015, <http://www.myknee.se>



## LINK PorEx® Technology

- Significant reduction of poly wear and release of metal ions<sup>1</sup>
- Ceramic-like surface<sup>1</sup>
- Outstanding hardness<sup>1</sup>

# LINK PorEx® Technology

## Unicondylar Knee Resurfacing

### References

- 1 Internal technical report: Study of the influence of TiN-coating on the ion release of CrCrMo-alloys in SBF buffer simulator testing.
- 2 Lateral unicompartimental knee replacement SURVIVORSHIP AND CLINICAL EXPERIENCE OVER 21 YEARS; T. Ashraf, J. H. Newman, R. L. Evans, C. E. Ackroyd From Southmead Hospital, Bristol, England.
- 3 Newman, J. et. al. Unicompartimental or total knee replacement. The 15-Year Results of a Prospective Randomised Controlled Trial. J Bone Joint Surg [Br] 2009; 91-B:52-7. Outcome at 15 year follow up. Survivorship rate based on revision or failure for any reason for UKR: 89.8%, for TKR 78.7%.
- 4 Annual Report Swedish Knee Arthroplasty Register., <http://www.myknee.se>
- 5 R.E. Gleeson, R. Evans, C.E. Ackroyd, J. Webb, J.H. Newman: Fixed or Mobile Bearing Unicompartimental Knee Replacement? Comparative Cohort Study, The Knee 11 (2004) 379-384.
- 6 R.G Steele, S. Hutabarat, R.L. Evans, C.E. Achroyd, J.H. Newman Survivorship of the St. Georg® Sled medial unicompartimental knee replacement beyond ten years, reprinted from J Bone Joint Surg [Br] 2006; 88-B:1164-8.

Waldemar Link GmbH & Co. KG

Barkhausenweg 10 · 22339 Hamburg, Germany

Phone +49 (0)40 53995-0 · [info@linkhh.de](mailto:info@linkhh.de)

[www.linkorthopaedics.com](http://www.linkorthopaedics.com)